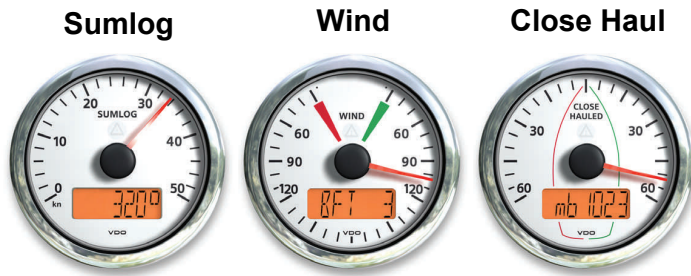


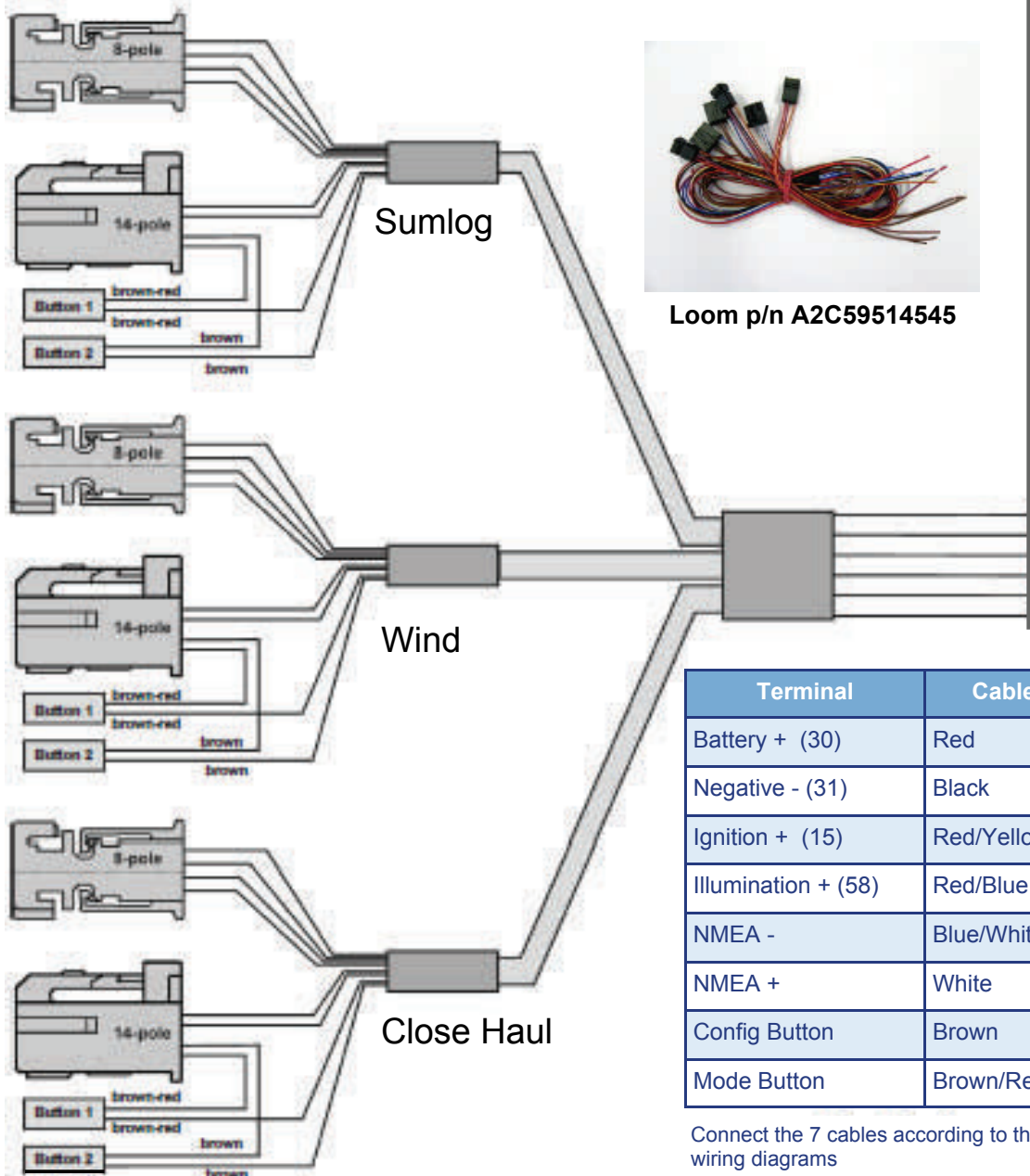
Sumlog - Wind - Close Haul



Electrical diagram



AirmarSensor
p/n PB100 or
p/n PB 200



Loom p/n A2C59514545

Terminal	Cable Colour
Battery + (30)	Red
Negative - (31)	Black
Ignition + (15)	Red/Yellow
Illumination + (58)	Red/Blue
NMEA -	Blue/White
NMEA +	White
Config Button	Brown
Mode Button	Brown/Red

Connect the 7 cables according to the following wiring diagrams

Insert the plug into the gauge. Note the inverse polarity protection nose in the process.