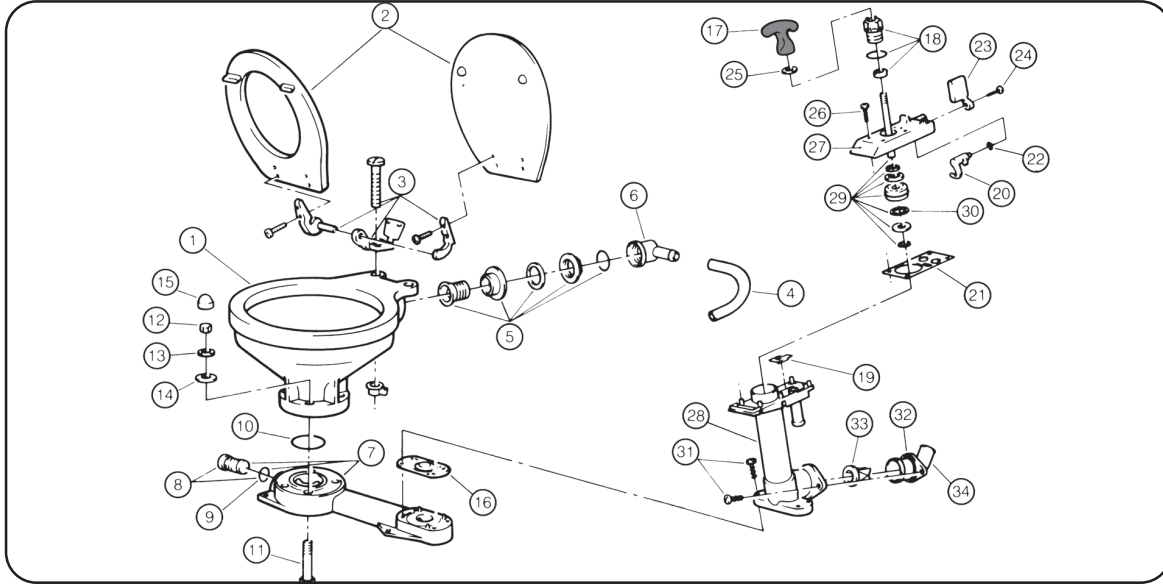


29090 & 29120 Series PAR Manual Toilets (up to 1997)



Repair Kits Available		
Kit	Part No	Description
A	29045-0000	MAJOR SERVICE KIT
B	29040-3000	PUMP ASSEMBLY
C	29094-3000	VALVE COVER ASSEMBLY
D	29051-2000	PUMP CYLINDER ASSEMBLY
E	29047-0000	BASE TO BOWL MOUNTING KIT



Key	Description	Qty Per Toilet	Part No	Qty per Repair Kit				
				A	B	C	D	E
1	BOWL COMPACT TOILET	1	29096-0000					
	BOWL REGULAR TOILET	1	29126-0000					
2	SEAT, LID & HINGE SET	1						
	COMPACT TOILET		29097-1000					
	REGULAR TOILET		29127-1000					
3	HINGE SET (1 PAIR)	1						
	COMPACT TOILET		29098-1000					
	REGULAR TOILET		29098-2000					
4	HOSE COMPACT TOILET	1	29035-1000					
	HOSE REGULAR TOILET	1	29035-1001					
5	INTAKE SEAL +	1	29048-0000					
6	INTAKE ELBOW	1	29041-1000					
7	BASE, PLUG + O-RING ASSY	1	29028-1000					
8	PLUG + O-RING ASSY	1						
9	O-RING (PLUG)	1						
10	O-RING (BOWL)	1						1
11	BOLT	4						4
12	NUT	4						4
13	WASHER (S.S)	4						4
14	WASHER (NYLON)	4						4
15	CAP	4			2			4
16	BASE VALVE GASKET	1	29043-0000	1	1		1	
17	HANDLE	1			1	1		
18	SEAL ASSEMBLY	1	29044-0000	1	1	1		
19	TOP VALVE SEAT	1		1	1	1	1	
20	CAM				1	1		
21	TOP VALVE GASKET	1	29042-0000	1	1			
22	O-RING (FLUSH LEVER)	1		1	1	1		
23	FLUSH CONTROL LEVER	1			1	1		
24	SCREW (FLUSH LEVER)	1		1	1	1		
25	BUFFER				1	1		
26	SCREW (VALVE COVER)	6		1	6	6	1	
27	VALVE COVER	1			1	1		
28	PUMP CYLINDER	1			1	1		
29	PISTON, ROD & O-RING ASSY	1	29046-3000		1			
30	O-RING (PISTON)	1			1	1		
31	SCREW (PUMP CYLINDER)	6			1	3	3	
32	DISCHARGE FLANGE	1	29091-1000		1	1		
33	JOKER VALVE	1	29092-1000	1	1		1	
34	DISCHARGE ELBOW	1	29029-1000		1	1		

PAR Manual Toilets
Up To 1997

Service Parts -