

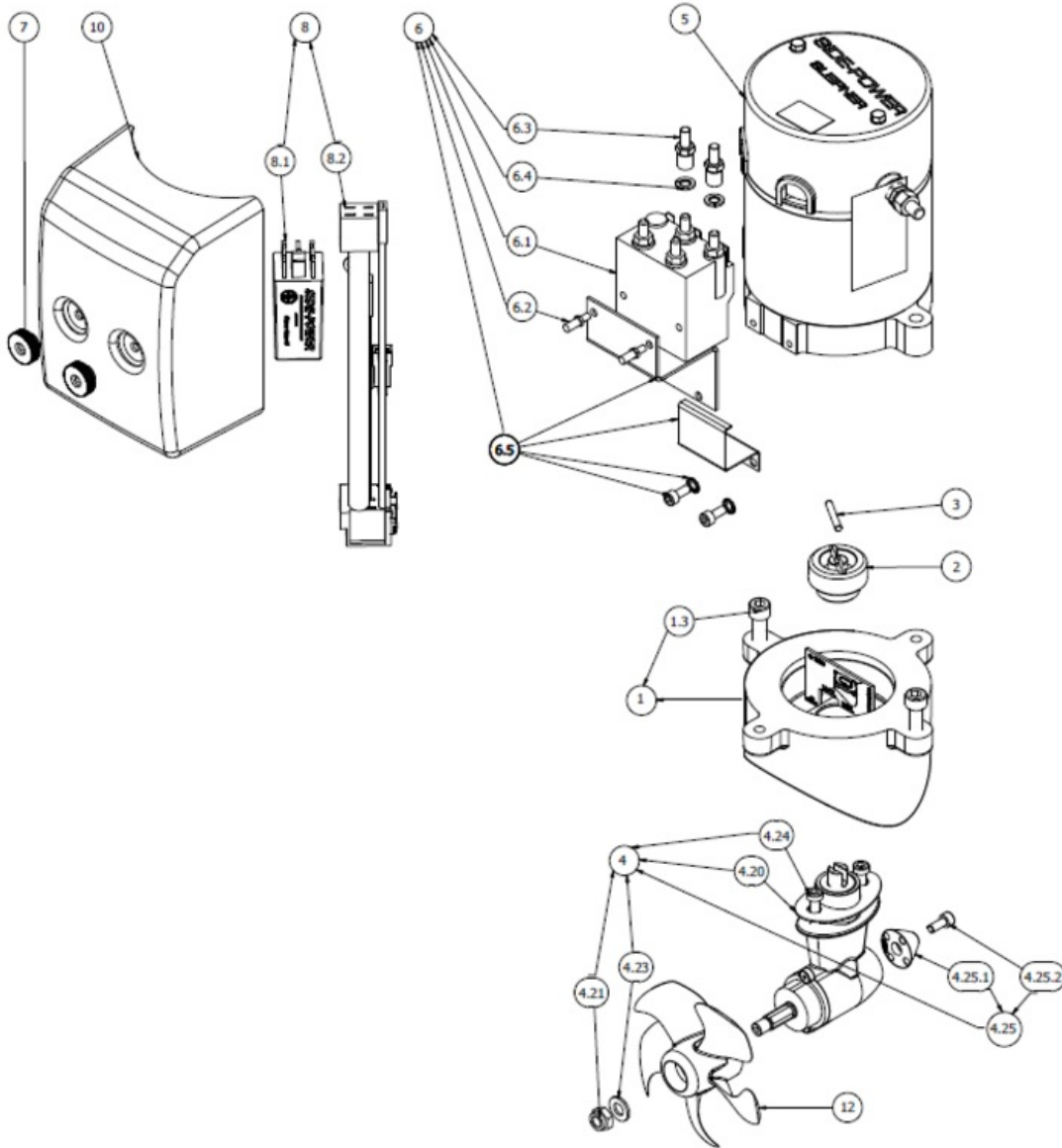
SE20/110S

SE20 Tunnel bow thruster, 12V

Spare parts (valid from 2021-06-29)



SLEIPNER



#	Name	Item Code	Description
1	Motorbracket complete Ø110	SM-126302	Complete motor bracket SE20/25
1.3	DIN 912 - M8 x 30	6 1360	Bolt M8 x 30 Unbraco
2	Coupling	SM-125918	Flexible coupling SE20/30/40
3	ISO 8734 - 4 x 28 - A	112032	Dowel pin 4 x 28
4	Gearleg u/propell	2 0600-U	Girhus SE20/25 mont. u/propell
4.12	DIN 471 - 7x0,8	3 1141	Låsering
4.20	Gasket	3 1310 10	Gasket for gearleg installation in tunnel, SE40
4.21	DIN 985 - M8x1,25	3 1250	Lock nut
4.23	DIN 125 - A 8,4	208125	Flat washer M8 A4
4.24	DIN 6912 - M6 x 30	110033	Hex socket head cap screw low M6 x30 A4
4.25	Anode Kit	3 1180 A	Anode kit, aluminium, SE30/40/50
4.25.1	Anode	3 9998	Anode, aluminium, SE30/40
4.25.2	DIN 912 - M5 x 12	3 1172	Bolt M5 x 12 Unbraco
5	Electric motor		N/A
6	Rele mounted SE20/25/30 -12V	41571122	Solenoid replacement
6.1	Rele SE 30-12V	4 1571 12	Solenoid replacement
6.2	Set skrue dekse	6 1287	Sett skrue deksel SE30
6.3	Foring messing	10 1274	Adapter mutter messing SE30
6.4	DIN 128 - A6	SM-136745	Spring lock washer curved M6 elz
6.5	Solenoid bracket kit	2 0135	Solenoid bracket kit SE30
7	Plastic Nut	6 8810	Nut for solenoid cover
8	SE20	SM162363	Control SE20
8.1	Delay relay	6 1232 I	IPC relay 12/24V
8.2	Wiering SE20	6 1199	Wiring loom SE20
10	Relay Cover	3 2024	Solenoid cover for SE30
12	Propeller Ø107	2 1261	Thruster propeller SE25
13*	Brushes for motor (kit)		**
14*	Brushes spring for motor (kit)		**
15*	Temp switch		**

(13*) Please provide thruster serial # when ordering product

(14*) Please provide thruster serial # when ordering product

(15*) Please provide thruster serial # when ordering product

The installer alone has responsibility for the installation of the spare parts. Side-Power only warranty the spare parts supplied only.

The information given in the document was correct at the time it was published. However, Sleipner Motor AS can not accept liability for any inaccuracies or omissions it may contain. Continuous product improvement may change the product specifications without notice. Therefore, Sleipner Motor AS can not accept liability for any possible differences between product and document.