

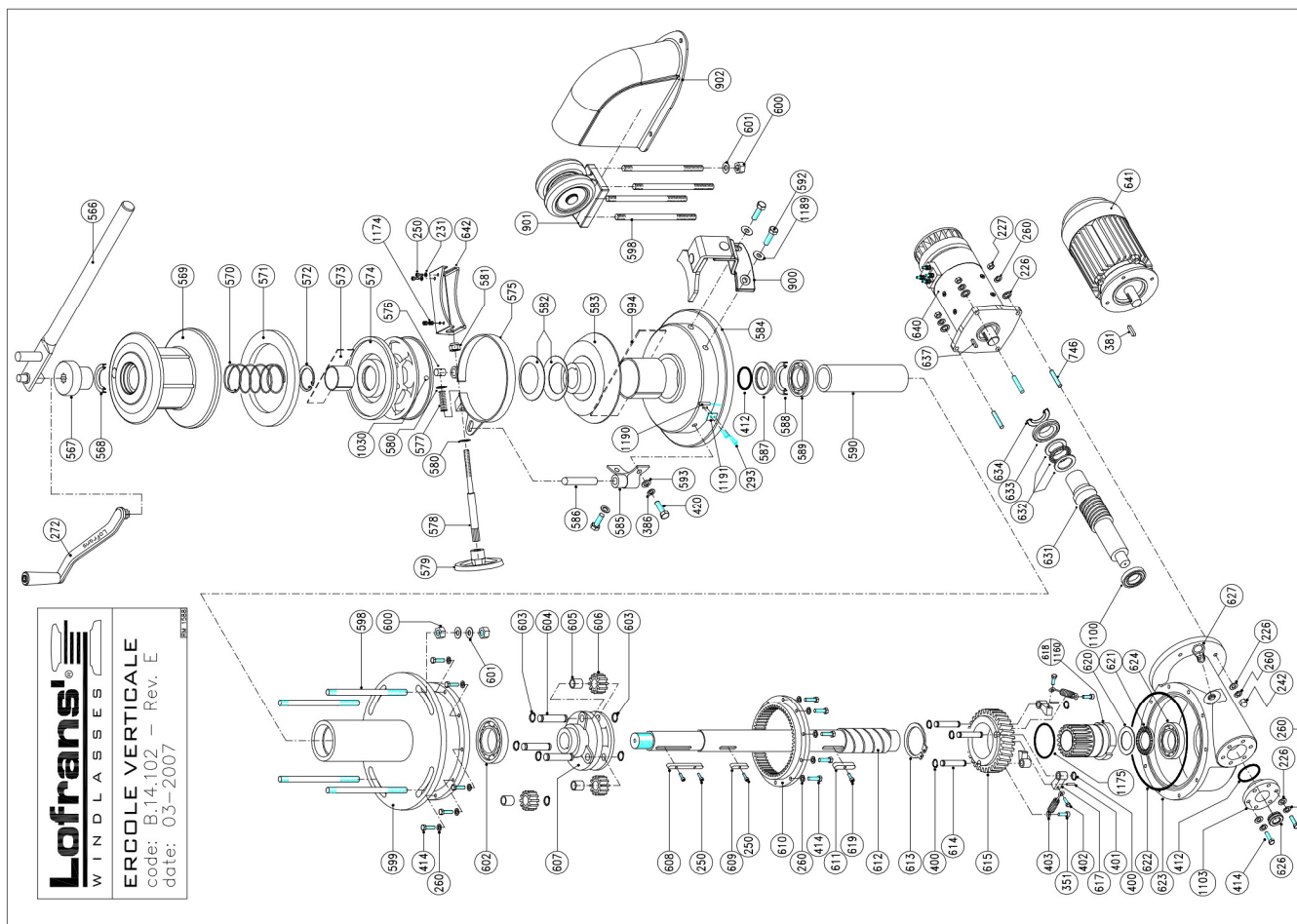
9 LISTA PARTI

9 PART LIST

9 LISTE DE PIÈCES

9 LISTA PARTI

9 LISTA PARTI



9 LISTA PARTI

9 PART LIST

9 LISTE DE PIECES

9 LISTA PARTI

9 LISTA PARTI

| Item | Description | Kit | Qty | Item | Description | Kit | Qty |
|------|--|-------|-----|---------|---|-------|-----|
| 226 | Washer for screw M8 | Kit B | 4 | 612c | Main shaft-chain = > 18-deck-thickness 150 | | 1 |
| 227 | Nut - M8 | Kit B | 14 | 613 | Circlip - 88 Din 471 | Kit D | 1 |
| 231 | Washer for screw M5 | Kit B | 2 | 614 | Pivot | | 3 |
| 242a | Cap nut - M8 | Kit B | 4 | 615 | Wormwheel - Mf=3,5Z=47 | | 1 |
| 250 | Hd cap screw - M5x8 | Kit B | 5 | 617 | Pawl | | 3 |
| 260 | Spring washer for screw M8 | Kit B | 38 | 618 | Ratchet wheel | | 1 |
| 272 | Handle | Kit B | 1 | 619 | Hd cap screw - M6x10 | Kit B | 1 |
| 293 | Hd cap screw - M5x16 | Kit B | 2 | 620 | Thrust ring - CP 5578 | | 1 |
| 351 | Hd cap screw - M6x20 | Kit B | 3 | 621 | Thrust bearing - AX5578 | | 1 |
| 381 | Key - 8x7x40 | Kit C | 1 | 622 | Gasket | | 1 |
| 386 | Spring washer for screw M10 | Kit B | 2 | 623 | Gearcase - lower | | 1 |
| 400 | Circlip - 15 Din 471 | Kit D | 6 | 624 | Bearing - 6210 2RSR | | 1 |
| 401 | Pivot | Kit B | 3 | 626 | Sightglass | | 1 |
| 402 | Hex hd screw - M6x16 | Kit B | 3 | 627 | Oil plug 1/2" | | 1 |
| 403 | Spring | Kit B | 3 | 631 | Worm | | 1 |
| 412 | O Ring seal - 153 | Kit A | 2 | 632a | Thrust bearing - 51108 | | 1 |
| 414 | Hex hd screw - M6x30 | Kit B | 30 | 633 | Spacer | | 1 |
| 420 | Hex hd screw - M10x25 | Kit B | 2 | 634 | Seal - 40x72x10 | Kit A | 1 |
| 566 | Handle | Kit B | 1 | 637 | Key - 8x7x30 | Kit C | 1 |
| 567 | Clutch nut | Kit A | 1 | 640 | Electric motor 3500 W 24 V | | 1 |
| 568 | Seal - 55x72x10 | Kit A | 1 | 641a | Electric motor A.C. ph. 1 V 220 Kw 5 Hz 50/60 | | 1 |
| 569 | Drum | | 1 | 641b | Electric motor A.C. ph 3 V 380 Kw 4 Hz 50/60 | | 1 |
| 570 | Spring | | 1 | 642 | Brake cover | | 1 |
| 571 | Cluch cone - outer | | 1 | 746 | Stud - M8x55 | Kit B | 4 |
| 572 | Circlip - 80 Din 472 | Kit D | 1 | 900a | Stripper gipsy 574 type e-f-g-l | | 1 |
| 573a | Nylon band | | 1 | 900b | Stripper gipsy 574 type b-d-h-m-n-o-p-s | | 1 |
| 573b | Nylon band | | 1 | 901 | Roller | | 1 |
| 574a | Gipsy chain 10 | | 1 | 902a | Chain pipe sid | | 1 |
| 574b | Gipsy chain 12 | | 1 | 902b | Chain pipe short | | 1 |
| 574c | Gipsy chain 12/HT | | 1 | 994 | Nylon band | | 1 |
| 574d | Gipsy chain 14 | | 1 | 1030 | Magnet | Kit S | 1 |
| 574e | Gipsy chain 15 | | 1 | 1100 | Combined bearing - 302b5A | | 1 |
| 574f | Gipsy chain 16 Din 766 | | 1 | 1103 | Sightglass flange | | 1 |
| 574g | Gipsy chain 1/2 Stud link | | 1 | 1160 | Ratchet wheel - left | | 1 |
| 574h | Gipsy chain 1/4 Stud link | | 1 | 1174 | Sat screw - M8x8 | Kit B | 2 |
| 574i | Gipsy chain 13 balmet | | 1 | 1175 | O Ring seal - 4325 | Kit A | 1 |
| 574j | Gipsy chain 13 Din 764 | | 1 | 1189 | Washer for screw M12 | Kit B | 2 |
| 574m | Gipsy chain 16 Stud link | | 1 | 1190 | Sensor | Kit S | 1 |
| 574n | Gipsy chain 18 | | 1 | 1191 | Sensor holder | Kit S | 1 |
| 574o | Gipsy chain 18 Stud link | | 1 | KA14101 | Kit A - Seals | | 1 |
| 574p | Gipsy chain 19 Stud link | | 1 | KB14101 | Kit B - Screws&Nuts | | 1 |
| 574s | Gipsy chain 18 Din 766 | | 1 | KC14101 | Kit C - Keys | | 1 |
| 575 | Band brake | | 1 | KD14101 | Kit D - Circlips | | 1 |
| 576 | Pivot | | 1 | KS14101 | Kit S - Sensor&magnet | | 1 |
| 577 | Spring | | 1 | | | | |
| 578 | Brake pivot | | 1 | | | | |
| 579 | Hand-wheel | | 1 | | | | |
| 580 | Washer for screw M12 | Kit B | 2 | | | | |
| 581 | Safety nut - M12 | Kit B | 1 | | | | |
| 582 | Dished plane spring | | 2 | | | | |
| 583 | Clutch cone - inner | | 1 | | | | |
| 584 | Brake pivot support | | 1 | | | | |
| 585 | Brake pivot | | 1 | | | | |
| 586 | Spacer | | 1 | | | | |
| 587 | Seal - 64x80x8 | Kit A | 1 | | | | |
| 588 | Bearing - 6010 2RS | | 1 | | | | |
| 589 | Spacer | | 1 | | | | |
| 590 | Hex hd screw - M12x55 | Kit B | 2 | | | | |
| 592 | Washer for screw M10 | Kit B | 2 | | | | |
| 593 | Stud - M14x210 | Kit B | 8 | | | | |
| 598a | Gearcase - upper | | 1 | | | | |
| 600 | Nut - M14 | Kit B | 8 | | | | |
| 601 | Washer for screw M14 | Kit B | 8 | | | | |
| 602 | Bearing - 6014 2RS | | 1 | | | | |
| 603 | Circlip - 18 Din 471 | Kit D | 6 | | | | |
| 604 | Pivot | | 3 | | | | |
| 605 | Bush | | 3 | | | | |
| 606 | Gear | | 3 | | | | |
| 607 | Gear flange | | 1 | | | | |
| 608 | Key - 12x3x30 | Kit C | 1 | | | | |
| 609 | Key - 12x6x30 | Kit C | 1 | | | | |
| 610 | Rack | | 1 | | | | |
| 611 | Key - 16x10x60 | Kit C | 1 | | | | |
| 612b | Main shaft-chain = < 16-deck-thickness 150 | | 1 | | | | |

B.14.102 - Rev.E Date: 03-2007

10 DIMENSIONI DI INGOMBRO

10 DIMENSIONI DI INGOMBRO

10 DIMENSION E'NCOMBREMENT

10 ABMESSUNGEN

10 DIMENSIONES TOTALES

