

9 LISTA PARTI

9 PART LIST

9 LISTE DE PIECES

9 LISTA PARTI

9 LISTA PARTI

PROJECT 1000

Item	Description	Kit	Q.ty	Item	Description	Kit	Q.ty
226	Washer for M8 screw	Kit B	4	KA25101			
227	Nut M8	Kit B	4	KB25101	Kit A - Seals	Kit	1
255	Key 6x6x25	Kit C	2	KC25101	Kit B - Screw&Nuts		1
272	Handle	Kit C	1	KD25101	Kit C - Keys		1
278	Seal 25-47-7	Kit A	1	KE25101	Kit D - Circlips		1
280	Circlip 23 Din 471	Kit D	2	KF25102	Kit F - Finger		1
284	Key 6x7x60	Kit C	1		Kit F - SIS Finger (option)		1
292a	Stud M8x75	Kit C	4				
293	Hd cap screw M5x16	Kit F	1				
304	Seal 40-55-7	Kit A	2				
308	Washer for M6 screw	Kit B	4				
309	Bearing 6203	Kit B	1				
311	Thrust bearing 51105	Kit C	1				
312	Circlip 43 Din 472	Kit D	1				
313	Seal 25-43-8	Kit A	1				
351	Hd cap screw M6x20	Kit B	8				
560	Ring	Kit B	1				
619	Hd cap screw M6x10	Kit B	1				
870	Bearing 6008	Kit B	2				
903	Stainless steel bearing 6006 2RS	Kit B	1				
904a	Base	Kit B	1				
905a	Finger	Kit F	1				
905b	Stainless steel finger (option)	Kit F	1				
906	Spacer	Kit F	1				
907	Hd cap screw M6x50	Kit B	2				
908a	Cover	Kit B	1				
909	Spring	Kit F	1				
910	Stripper	Kit F	1				
911	Support	Kit F	1				
912	Clutch nut	Kit F	1				
913	O Ring 3287	Kit A	2				
914a	Drum	Kit A	1				
915	Cone clutch	Kit A	2				
916a	Gipsy chain 06101	Kit A	1				
916b	Gipsy chain 08101	Kit A	1				
916c	Gipsy chain 10101	Kit A	1				
916d	Gipsy chain 10102	Kit A	1				
917a	Sld main shaft	Kit A	1				
918a	Gipsy cap	Kit A	1				
919a	LP main shaft	Kit A	1				
920	Gearcase - upper	Kit A	1				
921	O Ring 4375	Kit A	1				
922	Sleeve	Kit A	1				
923	Washer	Kit A	1				
924	Spring	Kit A	1				
925	Dog clutch	Kit A	1				
926	Wormwheel	Kit A	1				
927	Circlip 40 Din 471	Kit D	2				
928	Gearcase - lower	Kit D	1				
929	Worm	Kit D	1				
930a	Electric motor 1000W 12V	Kit D	1				
930b	Electric motor 1000W 24V	Kit D	1				
945	Cap	Kit F	1				
948	Bush	Kit F	1				
950	Circlip 47 Din 472	Kit D	1				
967	Gasket	Kit D	1				
1008	Pivot 7x14	Kit F	1				
1011	Hd cap screw M6x40	Kit B	1				
1026	Cap	Kit B	1				

B.25.101 Rev.D - Date: 09-2005

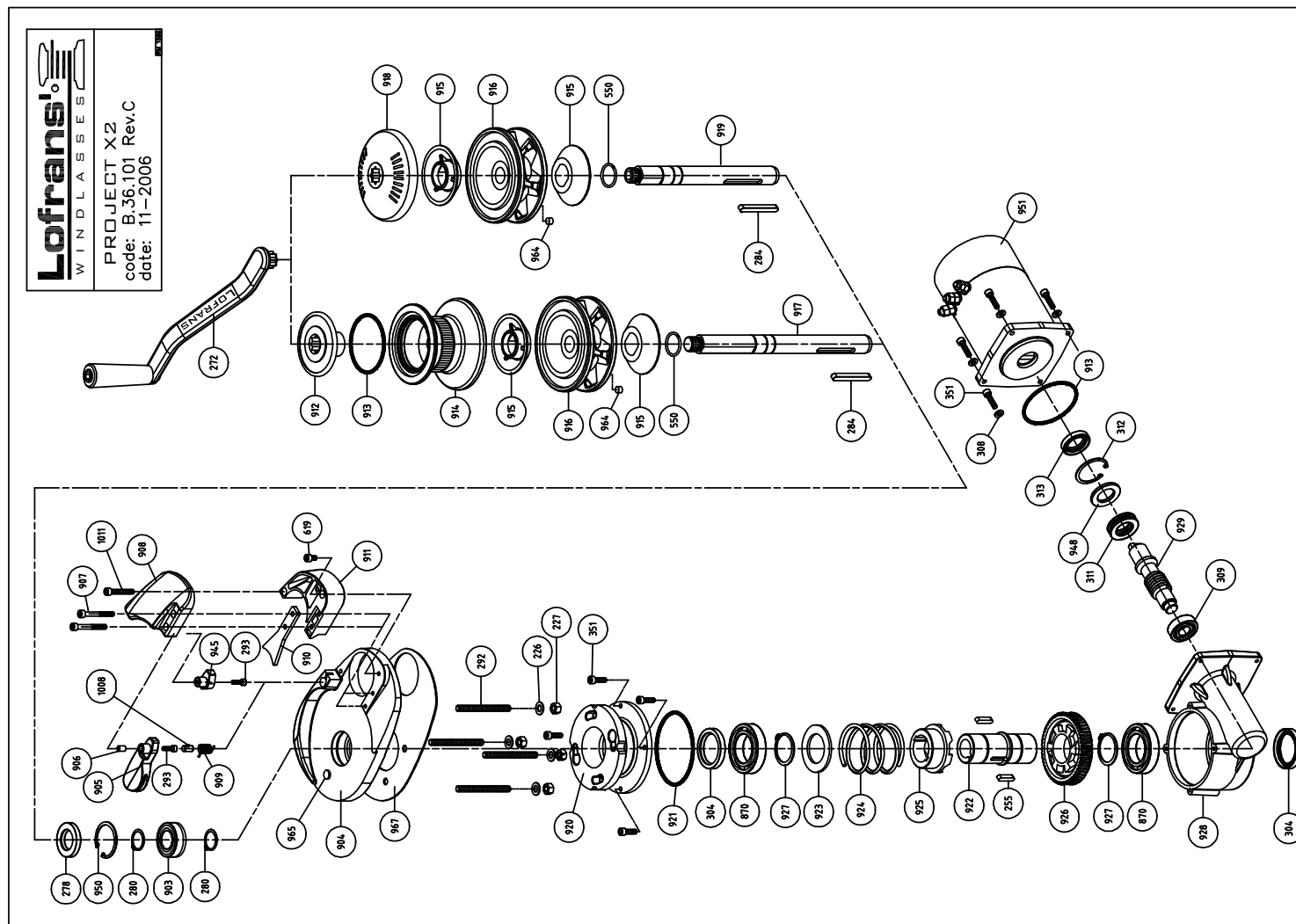
9 LISTA PARTI

9 PART LIST

9 LISTE DE PIÉCES

9 LISTA PARTI

9 LISTA PARTI



9 LISTA PARTI

9 PART LIST

9 LISTE DE PIECES

9 LISTA PARTI

9 LISTA PARTI

PROJECT X2

Item	Description	Kit	Qty	Item	Description	Kit	Qty
226	Washer for M8 screw	Kit B	4	KA25101	Kit A - Seals		1
227	Nut M8	Kit B	4	KB25101	Kit B - Screws&Nuts		1
255	Key 6x6x25	Kit C	2	KC25101	Kit C - Keys		1
272	Handle		1	KD25101	Kit D - Circlips		1
278	Seal 25-47-7	Kit A	1	KF25101	Kit F - Finger		1
280	Circlip 25 Din 471	Kit D	2	KF25102	Kit F - S/S Finger (option)		1
284	Key 8x7x60	Kit C	1	KS36101	Kit S - Sensor/magnet		1
292a	Stud M8x75		4				
293	Hd cap screw M5x16	Kit F	1				
304	Seal 40-55-7	Kit A	2				
308	Washer for M6 screw	Kit B	4				
309	Bearing 6203		1				
311	Thrust bearing 51105		1				
312	Circlip 43 Din 472	Kit D	1				
313	Seal 25-43-8	Kit A	1				
351	Hd cap screw M6x20	Kit B	8				
550	Ring		1				
619	Hd cap screw M6x10	Kit B	1				
870	Bearing 6008		2				
903	Stainless steel bearing 6005 ZRS		1				
904a	Base		1				
905a	Finger	Kit F	1				
905b	Stainless steel finger (option)	Kit F	1				
906	Spacer	Kit F	1				
907	Hd cap screw M6x60	Kit B	2				
908a	Cover		1				
909	Spring	Kit F	1				
910	Stripper		1				
911	Support		1				
912	Clutch nut		1				
913	O Ring 32x7	Kit A	2				
914a	Drum		1				
915	Cone clutch		2				
916a	Gipsy chain 06101	Kit A	1				
916b	Gipsy chain 08101	Kit A	1				
916c	Gipsy chain 10101	Kit A	1				
916d	Gipsy chain 10102	Kit A	1				
917a	Std main shaft		1				
918a	Gipsy cap	Kit S	1				
918a	LP main shaft		1				
920	Gearcase - upper		1				
921	O Ring 43x75	Kit A	1				
922	Sleeve		1				
923	Washer		1				
924	Spring		1				
925	Dog clutch		1				
926	Wormwheel		1				
927	Circlip 40 Din 471	Kit D	2				
928	Gearcase - lower		1				
929	Worm		1				
945	Cap	Kit F	1				
948	Bush		1				
950	Circlip 47 Din 472	Kit D	1				
951c	Electric motor 700W 12V		1				
951d	Electric motor 700W 24V		1				
951e	Electric motor 1000W 12V		1				
951f	Electric motor 1000W 24V		1				
951g	Electric motor 1200W 12V		1				
951h	Electric motor 1200W 24V		1				
964	Magnet	Kit S	1				
965	Sensor	Kit S	1				
967	Gasket		1				
1008	Pivot 7x14	Kit F	1				
1011	Hd cap screw M6x40	Kit B	1				

B.36.101 Rev.C - Date: 11-2006

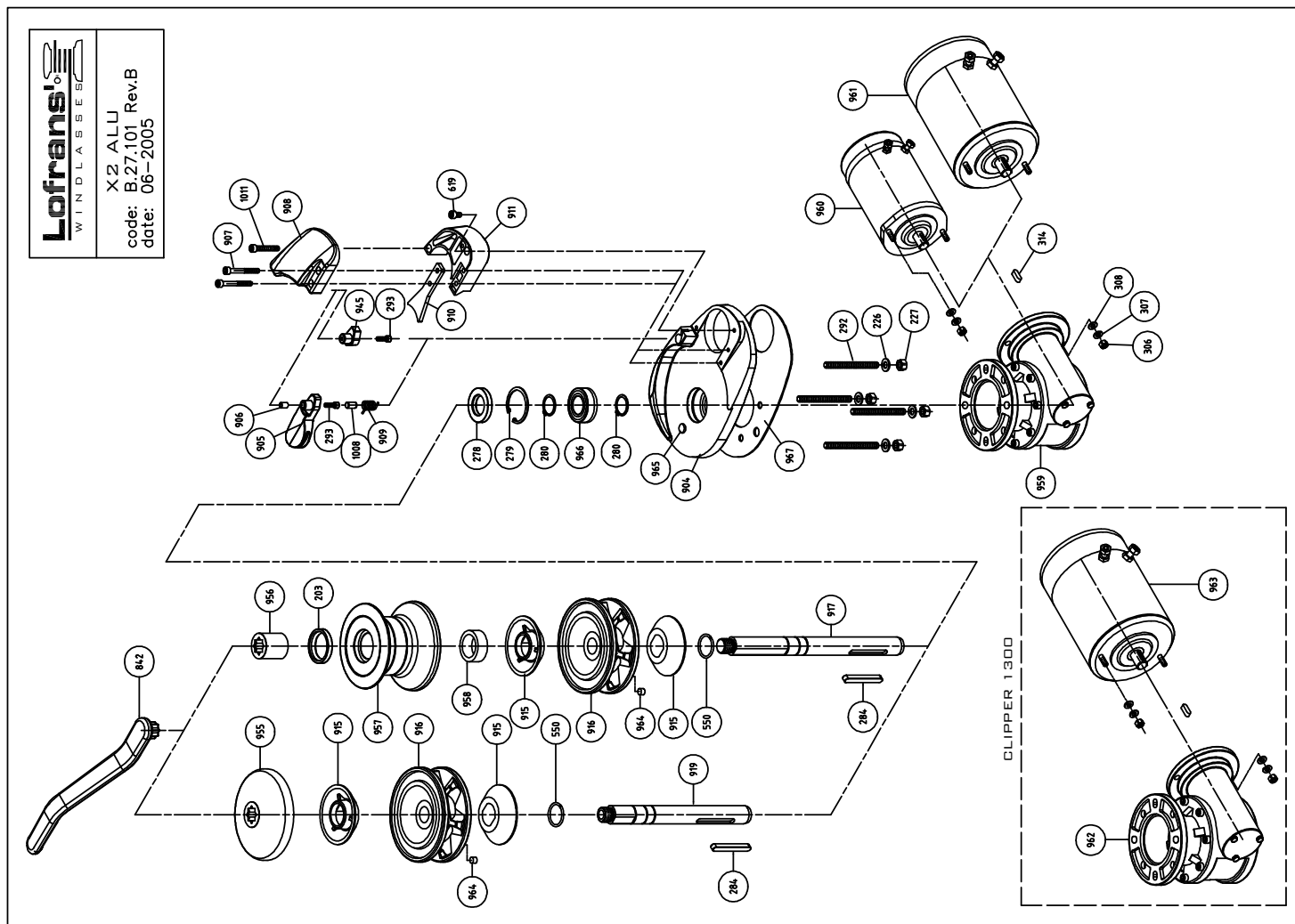
9 LISTA PARTI

9 PART LIST

9 LISTE DE PIECES

9 LISTA PARTI

9 LISTA PARTI



9 LISTA PARTI

9 PART LIST

9 LISTE DE PIECES

9 LISTA PARTI

9 LISTA PARTI

X2 ALU 700-1000-1500

Item	Description	Kit	Qty	Item	Description	Kit	Qty
203	Seal 35-45-5	Kit A	1	K427101	Kit A - Seals	Kit	1
226	Washer for M8 screw	Kit B	4	K827101	Kit B - Screw&Nuts		1
227	Nut M8	Kit B	4	KC27101	Kit C - Keys		1
278	Seal 25-47-7	Kit A	1	KD27101	Kit D - Circlips		1
279	Circlip 47 dln 472	Kit D	1	KF25101	Kit F - Finger		1
280	Circlip 25 Dln 471	Kit D	2	KS36101	Kit S - Sensor&magnet		1
284	Key 6x7x60	Kit C	1				
292a	Stud M8x75	Kit C	4				
293	Hd cap screw M6x16	Kit F	1				
306	Nut M6	Kit B	2				
307	Spring washer for M6 screw	Kit B	2				
308	Washer for M6 screw	Kit B	2				
314	Key 5x5x15	Kit C	1				
550	Ring		1				
619	Hd cap screw M6x10	Kit B	1				
842b	Handle		1				
904b	Base		1				
905	Finger	Kit F	1				
906	Spacer	Kit F	1				
907	Hd cap screw M6x50	Kit B	2				
908b	Cover		1				
909	Spring	Kit F	1				
910	Slipper		1				
911	Support		1				
915	Cone clutch		2				
916a	Gipsy chain 06101		1				
916b	Gipsy chain 08101		1				
916c	Gipsy chain 10101		1				
916d	Gipsy chain 10102		1				
917a	Sld main shaft		1				
918a	LP main shaft		1				
945	Cap	Kit F	1				
955	Gipsy cap		1				
956	Clutch nut		1				
957	Drum		1				
958	Spacer		1				
959	Gearbox for 700W-1000W		1				
960	Electric motor 700W 12V		1				
961a	Electric motor 1000W 12V		1				
961b	Electric motor 1000W 24V		1				
962	Gearbox for 1300W		1				
963a	Electric motor 1300W 12V		1				
963b	Electric motor 1300W 24V		1				
964	Magnet	Kit S	1				
965	Sensor	Kit S	1				
966	Bearing 6005 2RS		1				
967	Gasket		1				
1008	Pivot 7x14	Kit F	1				
1011	Hd cap screw M6x40	Kit B	1				

B.27.101 - Rev.B Date: 06-2005